

MG Corporation

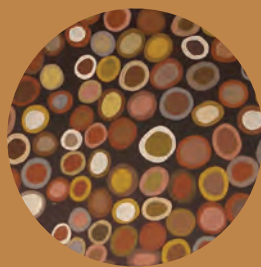
ANNUAL REPORT 2018-19

Σ66



MG CORPORATION

STRONG COUNTRY | STRONG CULTURE | STRONG FUTURE



'This is stony country—when I walk across this country where the creeks and the floodwaters have been there are lots of rocks and little stones. Lots of these stones are beautiful coloured ones. We call them gerany.'

This [original] painting also tells another story. It is a corroboree story given to the artist by her father describing the boundary of the stony Miriuwung country as well as a representation of her traditional country at WoorrooWoorrem. The artist walked this country when she was a child learning culture from her parents. As this story was given to the artist she passes it on to her children and grandchildren.

Phyllis Ningamarra, traditional owner and artist of the MG Corporation logo

Please note: Aboriginal and Torres Strait Islander people should be aware that this report may contain images or names of deceased persons.

© MG people and MG Corporation.

© Artwork by Phyllis Ningamarra. The artist retains the right to use the artwork as she sees fit.

Cover photo: MG cattle on MG country showing the MG6 brand.

Yawoorroong Miriuwung Gajerrong Yirrgeb Noong Dawang Aboriginal Corporation

Annual Report 2018–19

Overview	2
Theme Areas	3
Our Vision	3
Our Mission	3
Critical Priorities	3
Glossary	4
Chairperson's Message	5
Board of Directors	7
Chief Executive Report	8
Economic Development	9
MGC Building and Maintenance Pty Ltd	13
Activities and Events	15
Historic Event Celebrates MG-Durack Legacy	18
Social Initiatives	19
MG Community Foundation Trust	21
MG Prescribed Bodies Corporate	22
Cultural and Community Land	24
Yoorrooyang Dawang Regional Parks Council	25
Reserve 31165 Joint Management Committee	27
Partnership with the Jawun and Aurora Projects	29
Financial Report	30
Corporation Contact Details	

MG Corporation was established in 2006 to receive and manage the benefits transferred under the OFA to MG people, who are recognised under Australian law as holding native title over large areas in the North of Western Australia's East Kimberley region.

The OFA provides a broad package of measures to create a platform for future partnerships between MG people, the State Government, industry and developers for the benefit of the MG community and the wider East Kimberley region.

MG Corporation is committed to building a sustainable economic future for MG people beyond the life of the OFA by continuing to work with government and local stakeholders to achieve its commercial objectives.

MG Corporation's priority is to leverage economic opportunities to provide increased social benefits to MG people whilst protecting and promoting their culture and heritage.

Agriculture in MG country



THEME AREAS

ECONOMY: creating our future

To facilitate a vibrant local economy that enjoys sustainable business development and investment through a skilled and diverse workforce.

ORGANISATION: developing our capacity

To strengthen the capacity of MG Corporation and MG people to serve and contribute to meeting the needs of the community and members and deliver positive outcomes in partnership with the community, and business and government bodies.

COMMUNITY: the way we want to live together

To promote a healthy and supportive community and deliver culturally appropriate services and facilities that are available and accessible to all residents and members.

BUILT ENVIRONMENT: shaping our surroundings

To plan for the future development of the community and its members in ways which actively value the culture and the character of our community and provide access for all.

NATURAL ENVIRONMENT: it begins with each of us

To ensure that the natural environment is protected for future generations and managed in a culturally sensitive and appropriate manner.

OUR VISION

Achieving a healthy, wealthy and culturally strong MG community.

OUR MISSION

To build a strong economic and social base for MG people that protects and enhances MG culture and heritage.

OUR VALUES

A STRONG COMMUNITY

MG Corporation will strengthen the capacity and resilience of its community through partnerships with community, business, government and non-government sector groups in pursuing positive social, economic and environmental outcomes.

EXCELLENCE

The MG Corporation board of directors and staff will strive for innovation, continuous improvement and long term success in management and leadership practices, strategic planning and the performance of new technology and systems.

ACCOUNTABILITY

MG Corporation is accountable to its members and will conduct its affairs openly, in consultation with its community and with integrity and honesty, while reflecting the highest level of democratic governance and administration.

FAIRNESS AND EQUITY

MG Corporation recognises and values the needs of different sectors and groups within its community and works in partnership with volunteers, community agencies and state and commonwealth departments to ensure needs are addressed in a planned and timely manner.

CRITICAL PRIORITIES

CULTURAL

Protect and enhance MG culture and heritage.

ECONOMIC

Develop economic activities and income streams using the organisation's physical and financial capital through the PBCs, the trusts and other partnerships and initiatives.

SOCIAL

Support and facilitate improvements in MG community through investment in partnership arrangements with local, State and Federal Governments, non-government organisations, industry and community agencies.

ORGANISATIONAL

Develop a strong, sustainable and economically viable MG Corporation focusing on core business.

ADP	Aboriginal Development Package
CEO	Chief Executive Officer
CFT	Community Foundation Trust
Dawang	The country of a local (or estate) group that, together with the other Dawang, comprises the country of MG people
Dawang Council	The entity which oversees the operation of MG Corporation and its related entities, comprising one representative from each Dawang group
DBCA	Department of Biodiversity, Conservation and Attractions
DLT	Dawang Land Trust
DPLH	Department of Planning, Lands and Heritage
DRD	Department of Regional Development
DWER	Department of Water and Environmental Regulation
Garralyel	MG senior elders
JMC	Joint Management Committee
KAI	Kimberley Agricultural Investment Pty Ltd
KLC	Kimberley Land Council
MDWg	Mirima Dawang Woorlab-gerring
MG	Miriuwung and Gajerrong
MG Corporation	Yawoorroong Miriuwung Gajerrong Yirrgeb Noong Dawang Aboriginal Corporation
MGCBM	MGC Building & Maintenance Pty Ltd
NWAHF	North West Aboriginal Housing Fund
OES	Ord Enhancement Scheme
OFA	Ord Final Agreement
OIC	Ord Irrigation Co-operative
ORIC	Office of the Registrar of Indigenous Corporations
Participant	A person participating in the 100+ Jobs Initiative
PBC	Prescribed Body Corporate
R31165	Reserve 31165
TFS	Tropical Forestry Services
SWEK	Shire of Wyndham East Kimberley
YDRPC	Yoorrooyang Dawang Regional Parks Council

Introduction

I am thrilled and honoured to continue to represent my people as a director of MG Corporation and all MG Group entities and as Executive Chair.

This new role has allowed holistic decision-making at all levels within the MG Group and created a unique strategic focus, bringing all MG entities together to make streamlined and complementary decisions. It also provides improved communication between board and staff members, creates an improved support system for the CEO at an operational level, and provides increased opportunities for community members to be represented and supported within the organisation.

I believe that establishing an Executive Chair position at MG changes things: I am very proud to have been appointed as Executive Chair by my people. To me, it means that we can move forward as a group and open the gate for young Aboriginal people to further themselves and take on more responsibility.

I believe that having the flexibilities to meet with and discuss high priorities for MG and the region of the East Kimberley with senior Government officials has been rewarding, that our voices from the bush are being heard and actioned appropriately for MG people and the region and the government.

Strategic Direction

As I outlined to the members of MG Corporation when I became the Chair, my highest priorities are economic development, land management and the achievement of social outcomes for MG people. My goal is to develop economic independence and security for MG people and to turn our land into

riches without surrendering our native title. It is also of the highest importance for me to ensure that people understand that the MG PBCs are the formally recognised and demonstrated representatives of MG people and their connection to country. No one should enter MG country without first connecting with MG people and ensuring that their journey through the region is a safe and welcome one.

Increased Outcomes

Under my leadership, the reporting period has seen a significant increase in strategic focus and an increased achievement of economic and social objectives for MG Corporation and MG people. It has also seen a substantial improvement in native title representation and a broader appreciation from third parties of the role that MG people play in protecting and managing their country.

Social representation

I am proud to have been able to use my positions with other organisations and on other boards to better represent Indigenous people generally on economic and social issues, as well as the broader East Kimberley community in the development of Northern Australia.

It is important to me that local representation is meaningful and reflects the true wishes of MG people and not the individual. I will continue to listen to my people to make sure that they are truly represented by their own organisation.

Indigenous Reference and Advisory Groups

I am still serving on the Indigenous Reference Group since its inception in December 2017, advising the

Australian Government on the development of Northern Australia. The IRG comprises Indigenous leaders from across Northern Australia and works predominantly with Ministers Matt Canavan and Nigel Scullion in Canberra and the Office of Northern Australia to set the agenda for northern development and ensure that it is inclusive of MG interests and results in tangible benefits flowing to the MG community and the East Kimberley region.

With a clear focus on Indigenous advancement and the participation of Aboriginal people in the northern development agenda, the IRG is well placed to advise Ministers on how best to achieve the desired outcomes. IRG meetings have taken place this year in Darwin, Canberra and Brisbane.

I am a member of the Aboriginal Police Advisory Forum (APAF) recently established in mid October 2018. The Forum provides Police and Aboriginal leaders an open and collaborative environment to create holistic approaches that work for Aboriginal peoples in ways that take into account the diverse cultural, social and emotional context of Aboriginal people's lives; including an awareness of the ongoing legacy of trauma, grief and loss associated with colonisation.

The Forum provides high-level policy advice on the views, needs and interests of Aboriginal people as they relate to issues impacting the engagement of Aboriginal people and their communities in WA. The Forum provides feedback on existing and future policing programs and plans that impact Aboriginal peoples and communities in WA. Program and police development includes:

- corporate policy;
- service delivery and personnel practices;
- strategic initiatives; and/or
- legislatives.

The Forum is a balanced group of representatives and comprises not less than eight (8) Aboriginal persons external to the WA Police, to represent a genuine opportunity to build upon trusting and respectful relationships between Aboriginal people and the WA Police.

I am also a member of the Main Roads Aboriginal Employment Initiatives Strategic Business Case recently

Colin Saltmere, Ken Wyatt and Lawford Benning



appointed early 2019. The purpose of the Aboriginal Advisory Group (AAG) is to:

- assist in the guidance of Aboriginal business development across the State to assist in delivering Main Roads works and services
- create a strategy to deliver, and oversee delivery of actions towards achieving the recommendations in Main Roads/Nudge Collaboration Strategic Business Case on Aboriginal Employment Initiatives
- provide input to the development of a framework to engage Aboriginal people on contracts and within the workplace.

I am a member on the Kimberley Suicide Prevention Working Group since 2017 and continue to represent MG people and the wider East Kimberley region. The working group is an advisory group chaired by the Minister for Health. Its role is to provide advice on appropriate services and activity commissioned in the conduct of the suicide prevention trial in the Kimberley region. The working group will:

- ensure a more integrated, regionally-based approach to suicide prevention;
- consider appropriate services that may be commissioned in the conduct of the trial;
- share expertise on approaches to suicide prevention in the Kimberley region, particularly in regard to culturally appropriate approaches for Aboriginal and Torres Strait Islander communities;
- recognise the role of family support, community and culture in suicide

- prevention for Aboriginal and Torres Strait Islander peoples;
- support dissemination of the objectives and activities of the Kimberley trial to organisations and communities across the Kimberley region.

Contribution of the Garralyel

In terms of my contribution to MG Corporation, I am keenly aware of the need to listen to my elders and meet regularly with the Garralyel to make sure they are happy with the strategic direction and nature of my leadership. The MG Group would not exist without the priceless contribution of our old old people years ago and the sacrifices they made and no one living on MG country should ever forget that. I am proud to follow in their shoes and to continue their legacy.

MG Board

I am proud to sit alongside my fellow directors and have spent some time this year working with the board of MG Corporation to develop portfolios for each director to ensure accountability and effective performance management throughout the year for the members. It is important that members see results from their directors and I have put measures in place to ensure that key performance indicators are monitored and evaluated.

MG Staff

Having spent more time this year in the MG Corporation office with the



organisation's staff, I have a better understanding of the work that goes on and the daily challenges that are faced at operational, governance and administrative levels. Thank you to the MG staff who work hard to meet the objectives of the MG board and MG people. Thank you in particular to Dominique Reeves, the MG Senior Legal Counsel, who has worked diligently throughout the year to achieve the MG Group's ambitions and to provide guidance and advice to the CEO and the board regarding all the diverse and varied matters that present themselves to us.

MG Members

Once again, I would like to thank my members for appointing me and working with me as we improve ourselves in areas we need to and to create opportunity in areas we are able to. I look forward to another year of success and to seeing the MG Group capitalise on all of the hard work we have done this year to prepare for greatness in the future.



Lawford Benning

Lawford has been the Executive Chair of MG Corporation since April 2018. He is the Chair of all MG subsidiary entities, as well as both MG PBCs and the Joint Management Committee for Reserve 31165.

Born and raised in Kununurra, Lawford is a well-known member of the local community, having held senior positions with a number of local Aboriginal organisations. He is an inaugural member of the Indigenous Reference Group, advising the Australian Government on the development of Northern Australia, and the Aboriginal Police Advisory Forum, providing high-level policy advice to WA Police on behalf of Aboriginal people.

Donald 'Duck' Chulung

Donald was appointed as a director of MG Corporation in May 2017. He also holds director positions with MG Community Foundation and MG Cattle Co. Donald has previously served a number of terms as a director of MG Corporation. Duck is a well-known Kununurra businessman who has played a critical role in the Ord East-Kimberley Expansion Project, providing dry and wet plant hire and Aboriginal labour hire services to local contractors.

Donald was awarded Person of the Year in 2011 as part of the East Kimberley Aboriginal Achievement Awards.

Ted Carlton

Ted was appointed as a director of MG Corporation in May 2017. He also holds director positions on MG Community Foundation and the MG PBCs. Ted has extensive corporate governance experience, having held a number of senior roles with various Aboriginal organisations and government bodies, including the Aboriginal and Torres Strait Islander Commission.

Born on Carlton Hill Station, Ted spent his youth working in the Kimberley on stock camps and has an in-depth understanding of the region's native title and heritage values. He is currently

working as a tour guide for Waringarri Arts. Ted has a Bachelor of Applied Science from Curtin University and is a qualified alcohol counsellor.

Louise Mengil

Louise was appointed as a director of MG Corporation in December 2017 and resigned in May 2019. She is passionate about working within her community to achieve positive economic and social outcomes and has previously held positions at Save the Children and East Kimberley Job Pathways.

Born and raised in Kununurra, Louise grew up hearing the stories of her ancestry and culture from her artistic family members and was herself heavily involved in the Canning Stock Route Project, an art exhibition which explored the cultural diversity of Aboriginal communities and their interconnections with each other and their country.

Carol Hapke

Carol was appointed to the MG Corporation board of directors in May 2019. Carol is a local woman with strong family connections throughout the region who actively participates in preserving and upholding traditional law and culture, having been an integral part of the MG native title determinations.

She brings extensive grass roots community liaison experience and highly developed project management and coordination skills to the role of directors, having held positions with the MG PBCs and the MG Dawang Land Trust in the past as well as employment roles with Kununurra Waringarri Aboriginal Corporation and Gawooleng Yawoodeng Aboriginal Corporation.

Rowena Griffiths

Rowena was appointed to the MG Corporation board of directors in May 2019. Rowena was born and raised in Kununurra and has lived in the Mud Springs community her whole life. She took the position at MG Corporation this year to help MG people and be a voice for their future.

Rowena also has a wealth of experience in governance and community development, having been a Dawang Council Representative at MG for many years and having held roles with the Gelganyem Investment group.

Tom Stephens

Tom Stephens was appointed as an independent director with MG Corporation in May 2017. He is also an independent director for MG Dawang Land Trust. Tom has extensive corporate governance experience and currently holds a number of board positions, including as independent director of IBN Corporation Pty Ltd and Western Desert Lands Aboriginal Corporation.

Tom served as a member of parliament from 1982 to 2013, representing the Kimberley and Pilbara regions and awarded an Order of Australia in 2014 in recognition of his contribution to politics and Indigenous affairs.

David Mack

David Mack was appointed as an independent director of MG Corporation in January 2018. He is also an independent director with MG Community Foundation Trust, MGCBM and MG Cattle Co.

David holds a Bachelor of Commerce and is a qualified Chartered Accountant. In recognition of his outstanding achievements and contributions to his profession, David was awarded a Fellowship with Chartered Accountants Australia and New Zealand.

David has extensive commercial experience and has advised in relation to the acquisition of over 200 commercial enterprises. David was the founding partner of Mack & Co Chartered Accountants and is currently a Partner and Financial Advisor of Plummers Industries Pty Ltd. In addition to his accounting, tax and business administration expertise, David is well versed in property development, having developed over 750 residential premises.



Lawford Benning



Duck Chulung



Ted Carlton



Louise Mengil



Carol Hapke



Rowena Griffiths



Tom Stephens



David Mack

MG Corporation is open for business.

The organisation has, this year, cemented its reputation for action not rhetoric. Historic economic and commercial outcomes have been achieved in the pastoral, agricultural and building industries; social programs have been successfully delivered and social change advocated by MG leaders; governance and reporting have been irreproachable as ever. MG directors and staff manage to do all of this with a consistent eye on cultural integrity, the importance of native title and the needs of our members.

Key highlights for the year include:

Economic

- An incredibly successful Expression of Interest process being followed to gauge third party interest in MG land.
- The establishment of a 50/50 cattle business with Jack Burton for the development of an East Kimberley pastoral hub.
- Following a five-year negotiation period with the State Government and KAI, finally reaching agreement on the transfer documents necessary to allow the freehold interest in Goomig Lots 15 and 16 to be transferred to MG Corporation for agricultural development.
- Working towards the establishment of a joint venture partnership for agricultural development in the region with a giant in the cotton industry.
- MGCBM successfully constructing 8 houses in Kununurra as part of the NWAHF.
- MGCBM winning numerous awards in the region for its impressive training and apprentice programs.
- The development and implementation of MG's Strategic Agricultural and Pastoral Plan, written by Dominique Reeves and Deb Pearce under MG's Royalties for Regions funding agreement.
- A new direction in publicity and promotion of the MG Group and its activities through social media, the press, newsletters, the MG Corporation website and representation by MG directors and staff at all relevant economic forums, local business-after-hours events, commercial development conferences and meetings with key stakeholders.
- Numerous discussions with the Northern Australian Infrastructure Facility and representation at a political level regarding the Northern Australian development agenda

and the investment needed to allow economic development to take place.

- Continuing involvement in Seafarms' Project Sea Dragon with high level meetings taking place to ensure MG can maximise the opportunities during construction and the operations of the project, including the Legune Station ponds and Kununurra processing plant.

Social

- The successful design and implementation of the 100+ Jobs program, assisting some of the most marginalised people in the East Kimberley to move into permanent jobs.
- Submitting an application to State Government, and holding numerous meetings with WA Ministers and local stakeholders, for the establishment of a Youth Wellness Initiative in the region to assist children to move away from the penal system and into a safe and welcoming family environment.
- Effective advocacy regarding the issue of youth crime and the problem of kids on the street.
- Hosting the East Kimberley Indigenous Women's Development Conference.
- Continuing to work with KWAC to successfully deliver the One Family At a Time program.
- Forming an alliance with KWAC to work together on all social issues affecting MG people in the area.
- Continuing to work with DBCA to successfully deliver the Working on Country Rangers program.

Governance

- Once again the auditors have given MG Corporation and its related entities a clean audit outcome.
- The MG Group has continued to pursue and deliver the KPIs in its group strategic plan.

- MG Corporation is now also achieving the KPIs in its Strategic Agricultural and Pastoral Plan.

Events

- MG Corporation has hosted and participated in a number of great events this year, including the MG-Durack legacy celebration, the Treasurer's budget briefing, NAIDOC, and the MG ranger ten-year celebration.
- Over the year, a number of Federal and State Ministers, international diplomats and governors, and their senior personnel have visited Kununurra to meet with MG Corporation, including former Prime Minister Tony Abbott, Governor Kim Beazley, WA Minister Peter Tinley, WA Treasurer Ben Wyatt, WA Minister Alannah MacTiernan, Senator Pat Dodson, and the US Consul Rachel Cooke. Each meeting is used as an opportunity to maximise MG's social and economic agendas.

In closing, I'd like to thank our directors for their direction and support, our staff for dealing with the daily challenges and opportunities and, last but not least, our members, without whose support, we would not be able to achieve MG Corporation's mission, vision and values.

Allan Wedderburn



Well done is better than well said.

It has been a momentous year for MG Corporation in terms of economic development activities and MG people are well on their way to becoming financially self-sustainable.

Economic development activity within the MG Group is primarily undertaken by MG Corporation, in collaboration with the other MG Group entities. The MG Corporation directors adopt a holistic approach to economic development activity and hold the appropriate commercial acumen to enable strategic business decisions to be made.

As in previous years, the MG Group has spent the reporting period growing its existing portfolios, investigating commercial prospects regarding its land areas, developing joint venture arrangements with third parties for economic growth and generally capitalising on commercial opportunities in the region.

This year, however, has seen a number of very real economic achievements for MG people particularly in MG's agricultural and pastoral areas. MG Corporation has joined critical local organisations such as ORDCO, collaborating with other farmers in the region and ensuring that MG people are sitting at the table with other regional players. Opportunities in the tourism and aquaculture sectors, as well as within the mining industry, have also been considered throughout the year.



Louise Mengel, Duck Chulung, Ted Carlton, Richard Paterson, Lawford Benning and Jack Burton at the MOU signing celebration

Existing portfolio

Property management responsibilities have continued for the organisation throughout the year in respect of premises at Bandicoot Drive, Pindan Avenue, Ironwood Drive, Woollybutt Place, Kentia Way and Eucalyptus Close in Kununurra, all of which are let to third parties for a variety of uses including industrial, commercial and residential. MG Corporation's property portfolio also includes four residential properties in Kurrajong Street, which are let to local Aboriginal working families. MG Corporation also this year expanded on its residential portfolio by purchasing a property at Coleus Close.

Working closely with the Minister for Lands, Ben Wyatt, and his impressive team in Perth, MG Corporation also reached a milestone in its pursuit of sole vesting of Reserve 31165 in the organisation, working towards

the removal of the management responsibilities of the Department of Water and Environmental Regulation, so that MG people may achieve the aspirations of the Ord Final Agreement to manage their own lands without third party involvement. Sole management of the Reserve will assist MG and its newly formed cattle company to take advantage of cattle markets and the impressive pastoral country within the MG determination.

MG Strategic Agricultural and Pastoral Plan

MG Corporation used its \$500,000 Royalties for Regions funding wisely this year to design and implement its ground-breaking Strategic Agricultural and Pastoral Plan. The plan provides a blueprint for the region in terms of economic development opportunities on MG land and strategic guidance to the MG Corporation board regarding how best to convert its native title into real outcomes for MG people.

Expression of Interest Process

Following the aspirations of the MG Strategic Agricultural and Pastoral Plan, MG Corporation called for expressions of interest in September 2018 from potential joint venture partners to develop agricultural enterprises on its farm lands in the East Kimberley, commencing with Goomig Lots 15 and 16.

Lots 15 and 16 at Goomig are part of the Ord-East Kimberley Expansion Project



Inaugural meeting of MG Cattle Company

MG Cattle Company Pty Ltd, a 50/50 joint venture partnership between MG Corporation and NPM, was established in June 2019.



MG cattle showing MG6 brand



and are within a broader agricultural area initially developed by the State and now farmed by KAI. The lots were chosen by MG Corporation as a result of their rich soils and have already been partially cleared and developed as part of an agreement between MG Corporation and KAI. Both lots have all environmental and other approvals, a guaranteed water supply, completed farm designs, partial irrigation infrastructure and close proximity to Wyndham Port.

Joint venture proposals which actively incorporated MG personnel, businesses and interests were considered more favourably than those in which a passive role for MG is envisaged. Given MG Corporation's extensive land portfolio, JV partners were also encouraged to consider the potential to work with MG to develop other areas of the East Kimberley and may be given a right of first refusal for other MG land entitlements.

Following an exciting response to the call for EOIs, MG Corporation commenced negotiations with preferred joint venture partners in November 2018.

MG Cattle

MG Corporation announced the first of its joint venture partnerships for the economic development of MG land in March 2019: an agreement



MG and NPM celebrate historic cattle deal



MG Corporation directors and Myuma Group representatives announce their partnership



Dominique Reeves speaks to the press about the MOU with NPM

During the visit, directors from each organisation came together in Kununurra to celebrate the announcement of their partnership for the growth and harvesting of spinifex on MG country for processing in Queensland.



with Northern Pastoral Management (NPM) to establish an East Kimberley Cattle Hub.

Industry leaders, Jack Burton and Richard Paterson from NPM, travelled to Kununurra to sign a Memorandum of Understanding with the MG Corporation board on MG country. The two parties agreed to explore the development of a cattle supply chain from the East Kimberley to Mr Burton's abattoir in Broome.

Lawford Benning said the organisation is working hard to develop ways of earning sustainable revenue from MG land. "MG Corporation has native title over almost 14,000 square kilometres of land in the East Kimberley, and we want to find ways to generate an income from some of that land," he said. "Aboriginal people have a proud history of involvement in the cattle industry in the Kimberley and now is the time to take a more active role. We are excited about having the opportunity to work with such a well-established name in the cattle industry and the opportunities this project could provide for MG people".

MG and NPM agreed to work together to explore the possibility of establishing a cattle hub on MG land, including centre-pivot irrigation, a licensed weighbridge, a feedlot, drafting facilities and quarantine yards. MG Cattle Company Pty Ltd, a 50/50

joint venture partnership between MG Corporation and NPM, was established in June 2019.

The company wasted no time and celebrated an exciting milestone in June, with the arrival of its first 1,200 head of cattle on MG country. The cattle were purchased by MGCC from Moola Bulla Station near Halls Creek.

MG Agriculture

Concurrent with its pastoral negotiations, MG also embarked on joint venture negotiations with impressive third party partners in the agricultural sector as well as State Government and other local growers in order to consider the best crops to grow on MG country to make best use of MG land and capitalise on benefits for MG people.

Spinifex

Representatives from MG travelled to Queensland in December 2018 to consider joint venture opportunities with the Myuma Group and research agricultural developments at the University of Queensland.

Myuma Group's founder, Colin Saltmere, spoke to MG about the history of the organisation and its involvement in the agricultural use of spinifex, working closely with the University of Queensland. The MG

team was given a presentation by the head chemist leading Myuma's spinifex project, demonstrating the equipment created by Myuma to harvest spinifex and speaking of the plant's numerous properties and uses. Later travelling to Brisbane with the Myuma Group, the MG team also attended a tour of the University of Queensland's Spinifex Research Unit.

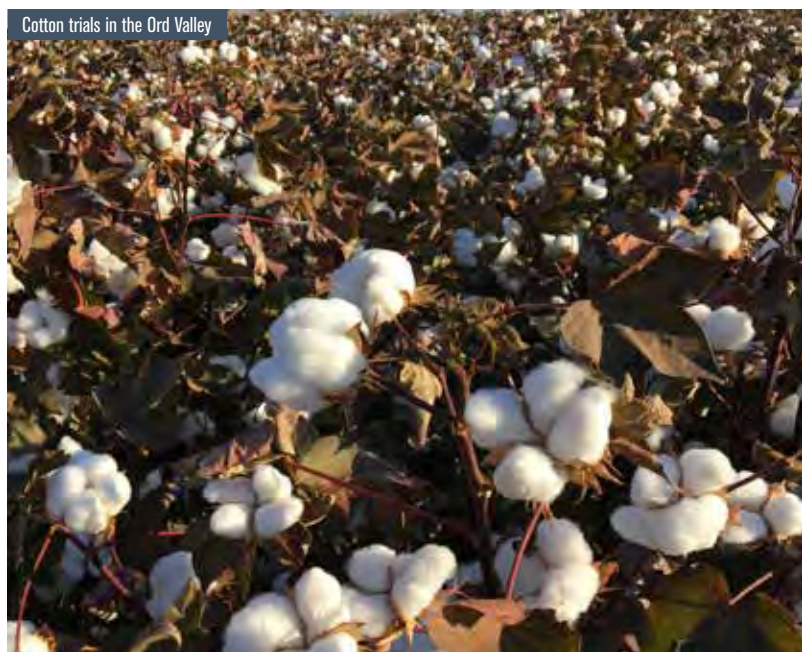
MG Corporation returned the favour by hosting Myuma Group representatives on MG country in May 2019. During the visit, directors from each organisation came together in Kununurra to celebrate the announcement of their partnership for the growth and harvesting of spinifex on MG country for processing in Queensland.

The deal represents the first time that two Aboriginal groups from different states have reached agreement on a partnership deal of this nature.

Cotton

As a result of its EOI process, MG Corporation began joint venture negotiations with a giant in the cotton industry for the growth of the commodity crop in the region.

Commencing with the use of Goomig Lots 15 and 16 for the purpose of growing cotton, the partnership – due to be announced in late 2019 – is



Commencing with the use of Goomig Lots 15 and 16 for the purpose of growing cotton, the partnership – due to be announced in late 2019 – is likely to expand into other areas on MG country.



likely to expand into other areas on MG country. The partners will also work together with existing growers such as ORDCO and KAI to establish a meaningful industry in the Ord Valley and sufficient cotton credibility to justify the capital expenditure necessary to establish a cotton ginny in the area.

The partnership represents a major boost for MG in terms of its economic development activity and has a real potential to improve the agricultural industry in the region.

In order to spread its risk and capitalize on available benefits to MG people, MG Corporation has also commenced negotiations with local growers for the growth of cotton elsewhere. This assists MG and its joint venture partners to work towards infrastructural development in the region and ascertain sufficient cotton credibility in the valley to reach appropriate economies of scale.

Hemp

Working with the WA Department of Primary Industries and Regional Development and, locally, with the Kimberley Development Commission,

MG Corporation also continued its hemp trials at the Frank Wise Institute this year.

In May 2019, it was announced that MG Corporation would receive an additional \$47,000 in funding to develop a five-year commercial plan for the production of industrial hemp products. The funding was awarded through the State Government's Regional Economic Development grants program.

OFA entitlements

As in previous years, MG Corporation has spent the reporting period working with appropriate State Government departments in order to achieve the aspirations of the OFA and, in particular, acquire the land entitlements for MG people anticipated under that agreement.

Following a five year negotiation period, MG Corporation is due to receive the freehold interest in Goomig Lots 15 and 16 from the State Government in late 2019. MG Corporation continues to work with the State Government and third party developers to encourage the agricultural development of land at Knox, Mantinea

and Ord West Bank. It has also been working with local growers and the OIC to develop Ord East Bank.

Other areas

In line with its Strategic Agricultural and Pastoral Plan, MG Corporation has also spent the year working closely with the Department of Planning, Lands and Heritage to follow that department's Land Tenure Pathway for Irrigated Agriculture in order to acquire strategic areas of Unallocated Crown Land. This is a lengthy process that will likely take many years to finalise.

MG team on Myuma country



Goomig Lot 16



Agricultural machinery in the Ord



Growing on the success of the previous reporting period, MGCBM has gone from strength-to-strength this year with notable achievements in terms of projects completed, contracts awarded, satisfied customers, and the celebration of its training and apprenticeship programs.

NWAHF

An unprecedented amount of building work has taken place this year under the NWAHF, with MGCBM completing the construction of eight residential houses in Kununurra.

MGCBM was contracted by the WA State Government in April 2018 to help deliver 50 houses in the East Kimberley under the NWAHF, a \$200 million program. The NWAHF project has seen the direct employment of six Aboriginal apprentices at MGCBM.

MGCBM's achievements under the NWAHF are clearly demonstrated by the level of interest from WA State Government representatives. The WA Premier, Mark McGowan, visited MGCBM's construction site at Bluegrass Avenue in August 2018 to speak to the apprentices about their work and witness first-hand their impressive progress on work packages under the NWAHF. The Premier expressed his happiness at seeing local Aboriginal people working on their own country, building homes for local Aboriginal families and seeing the apprentices' real pride in their work.

Building on this relationship with State Government, MGCBM representatives also met with Housing Minister Peter Tinley in Kununurra in September 2018 to review the houses constructed by MGCBM under the NWAHF and discuss co-design principles and the challenges faced by apprentices.

In March 2019, a delegation from the Department of Communities dropped into a house under construction in Bluegrass Avenue taking the MG crew by surprise. The delegation included the Acting Director General Michelle Andrews and Assistant Director General Rachel Green. Michelle Andrews was particularly interested in the employment and training opportunities the NWAHF project has provided and what

inspires apprentices to enter the building trade and turn up every day. The role of having an experienced tradie working side by side with an apprentice has resulted in great skills transfer, mentoring and increased capacity building of the apprentices.

Kununurra Neighbourhood House (KNH)

Following a competitive tendering process, MGCBM was also this year successful in securing an historic construction contract for the new KNH.

In 2017, a grant of just over \$2 million dollars from Lotterywest towards the construction of the new KNH building was announced by the Minister for Regional Development, Alannah MacTiernan, and local Member for the Kimberley Josie Farrer, at a playgroup sundowner in Kununurra. The Shire of Wyndham-East Kimberley has reserved land for KNH on Chestnut Drive. MGCBM is proud to be working on such a landmark building



in Kununurra and one which brings the whole community together.

MGCBM representatives and community stakeholders broke ground at the Chestnut Drive site of the new KNH in April 2019.

The long-awaited new community centre will provide KNH with a much-needed new home, so it can continue to provide essential family support services, education courses and emergency relief, as well as recreation activities and events for the local community. The first stage of construction includes a community activity area, children's area and creche as well as administration and meeting rooms.

KNH Chairperson Maria Chan said she was thrilled to see MGCBM turn the sod at the site, which employs Indigenous apprentices and local tradesmen for the project.

"It is incredibly exciting to finally be at the construction stage and we are proud to be building the new Neighbourhood House alongside the organisation that represents the Traditional Owners of the land on which it will be built," she said.

"This has been a community project from the start, and it means a great deal to us to see our new community centre built, run and used by people of our community, as a place for all of us to belong together."

Project Sea Dragon

Although contracts have not yet been awarded a result of Seafarms'

Malik Kennedy, Brendan Nelson, Corbin Dryden, Alex Ripps, Franklin Greddon and Tyson Wilson





MGCBM-built house under the NWAHF



Chris Griffiths, Brad Durack and Peggy Griffiths at the Jiylinum block

funding status, MGCBM successfully completed the tender process for a number of works packages issued under Project Sea Dragon at Legune Station in the Northern Territory. In respect of all tenders, MGCBM conducted its own joint venture negotiations with potential construction and civil partners. Memoranda of understanding and joint venture deals have been reached with relevant parties in readiness for contract award.

Considerable work went into preparing tender responses for Seafarms and it is a credit to the growth of MGCBM that it was able to negotiate contracts with third parties and submit tender responses whilst continuing the expansion of its construction business and satisfying the requirements of existing clients.

Jiylinum Aboriginal Corporation

Following months of architectural designs, funding applications and planning, the Jiylinum Aboriginal Corporation signed a building contract with MGCBM in January 2019 for the construction of 4 accommodation buildings at its block just across the Northern Territory border.

The contract represents the first time that MGCBM has worked with an MG family to build a community home. Both this contract and other contract opportunities with Seafarms at Legune mean that MGCBM and its builders have now obtained Northern Territory building licences, expanding the company's reach even further than the Kimberley and Western Australia.

Lake Maintenance

In addition to its larger scale construction projects, MGCBM is completing an increased volume of work for Lake Maintenance. The partnership works well in terms of repairing and maintaining community homes in the Kimberley and demonstrates commitment on both sides to achieving Aboriginal engagement outcomes on houses occupied by Aboriginal people.

Apprentices

All projects completed by MGCBM are done using Aboriginal apprentices, trainees, sub-contractors and employees and MGCBM is proud of its commitment to local training and employment outcomes for local people. As part of that commitment, MGCBM is participating in the 100+ Jobs Initiative delivered by MG Corporation.

MGCBM apprentice, Corbin Dryden, completed his trade certificate in carpentry and joinery in February 2019, with one more MGCBM apprenticeships expected to complete their apprenticeships later in the year.

With several large projects commencing, MGCBM has increased its MG employment and has recruited Vincent Kennedy as a mature aged carpentry apprentice and his son Malik Kennedy has started working for MGCBM and starts his Carpentry Apprenticeship Next year. MGCBM has also recruited two new MG school-based construction trainees through KGT Employment.

Awards

The hard work of MGCBM and its apprentices was recognised at the 2019 Master Builders-Bankwest Building Excellence Awards at Cable Beach in Broome in May 2019 and the East Kimberley Aboriginal Achievement Awards in Kununurra

The awards are hosted annually by Master Builders to provide an opportunity for builders in the Kimberley-Pilbara region to showcase their best homes and commercial projects.

The Kimberley-Pilbara region is by far the largest of the five regional awards areas, with this year seeing submissions from Kununurra, Exmouth, Derby, Karratha, Onslow and Broome. MGCBM won the award for "Best Multi Unit Development" in the Under \$1 Million category for its two-dwelling development on Calytrix Avenue, which was completed in December last year.

The organisation cleaned up in the Best Carpentry Apprentice award, with MGCBM apprentice Alex Ripps winning and two other MGCBM apprentices finishing as finalists. Alex was joined as a winner by MGCBM apprentice Brendan Nelson, who won Best Direct Indentured Apprentice, with both named finalists for the Best Indigenous Building & Construction Apprentice alongside fellow MGCBM apprentice Corbin Dryden.

The results are a testament to MGCBM's work with apprentices, which was formally recognised by the Employer Trainer of the Year award.

The East Kimberley Aboriginal Achievement Awards held in Kununurra – MGCBM won the Outstanding contribution to Aboriginal Employment and Training. Congratulations to MGCBM and its apprentices, who continue to outperform all other local building companies in terms of quality, price and Aboriginal engagement.

Corbin Dryden



The MG Group continues to be a strong advocate for MG and other Aboriginal people regarding social and community issues and its directors stand as proud leaders in the community promoting a strong country, a strong culture and strong future.

SOCIAL

During the reporting period, MG representatives attended and presented at numerous conferences and forums on a range of social issues affecting Aboriginal people, including youth wellness, community safety, health awareness, family and domestic violence, and suicide prevention. Once again, MG men shone a light on men's health issues by working with Ernie Dingo and his team.

Following a call to do so from the community and the local police, MG Corporation hosted a number of community safety meetings in order to address sensitive issues such as kids on the street and youth crime. MG leaders were critical in bringing the broader community together to discuss these issues in an open and honest way in order to bring about real change and reconciliation in the town.

MG Corporation presented its Youth Wellness Initiative to the business community in October 2018 at the Business After Hours event held by the East Kimberley Chamber of Commerce and Industry to update members on joint strategies to address social issues affecting Kununurra. MG Corporation took centre stage, presenting its Youth Wellness Initiative and updating members on its discussions with Ministers in Perth to promote the program. MG Executive Chair, Lawford Benning, also took the opportunity to speak about MG's continuing work as part of Operation Orange Sky.

In May 2019, MG Corporation hosted the East Kimberley Indigenous Women's Development Conference. The conference invited all Aboriginal women in the East Kimberley, and those women working in service provision alongside Aboriginal women, to a free 2 day conference to identify and discuss the barriers that Aboriginal women face

and how we as a community can work together to overcome those barriers.

CULTURE

The MG Group strategic focus has always been on culture and connection to country and this year was no exception.

As in previous years MG Corporation and its people played a central part of organising the 2018 NAIDOC event, this time celebrating the invaluable contributions that Aboriginal and Torres Strait Islander women have made – and continue to make – to our communities, our families, our rich history and to our nation. The theme of the week was "Because of Her, We Can!". The



Josie Farrer and Mark McGowan dance with MG elders at NAIDOC event





MG team and elders welcome Kim Beazley to Kununurra

Mirima dancers started the NAIDOC event with a bang and convinced the Premier himself to join them for a jig. MG Corporation helped to organise NAIDOC events throughout the week as part of the local committee and sponsored an MG prize at the ball.

The MG PBCs worked closely throughout the year with the WA State Department for Planning, Lands and Heritage and other Aboriginal and native title groups to consider the proposed changes to the outdated Aboriginal Heritage Act. A formal submission was made by the MG PBCs to the State in respect of the changes in May 2019.

ADVOCACY

The reporting period saw a continued focus on Indigenous representation on all economic and social issues and a strengthening of MG's relationship

with the State Government thanks to the attention of the McGowan administration.

MG Corporation brought local Aboriginal Corporations together in July 2018 to meet with US Consul Rachel Cooke and discuss common issues. Ms. Cooke was keen to hear about local social and economic initiatives lead by MG organisations and was met by representatives from MG Corporation, KWAC, Binarrri-binyja yarrowoo Aboriginal Corporation, Waringarri Media, and Waringarri Arts.

Representatives from MG met with WA Governor Kim Beazley in August 2018 to welcome him to MG country and discuss social and economic issues affecting MG people. A key message from the meeting was that MG Corporation must receive its land entitlements under the OFA

from the State before it will become economically sustainable.

The WA Minister for Housing, Peter Tinley, visited Kununurra in September 2018 to meet representatives from MG Corporation and review the houses constructed by MGCBM under the NWAHF. Other Aboriginal organisations involved in the NWAHF were invited to join Minister Tinley at a morning tea which took place at MG Corporation. MG directors welcomed the contingent to MG country and spoke to the group about the importance of the project and the great work that MGCBM has done in completing the works to date: on time and on budget.

MG directors met with Senator Pat Dodson in Kununurra in April 2019 who was accompanied by the federal election Labor Candidate for Durack,



MGCBM directors discuss ongoing community housing issues with Peter Tinley



Rachel Cooke



MG Corporation directors and joint venture partners with Alannah MacTiernan



MG representatives meet with Pat Dodson



Also in May 2019, MG Corporation hosted WA Treasurer Ben Wyatt for a 2019-20 Budget briefing at Ski Beach in Kununurra. Open to Aboriginal community members, Aboriginal directors and representatives from Aboriginal organisations, the Treasurer used the briefing to discuss what the budget will mean for the East Kimberley region. The briefing focused on agriculture and juvenile justice, as well as schools and apprenticeships. The Treasurer also took the opportunity to discuss his proposed reforms for the Aboriginal Heritage Act, which have the strong support of MG Corporation.

The Member for Kimberley, Josie Farrer, also attended and later joined the Treasurer for a private meeting at MG Corporation with key representatives from the organisation. The meeting addressed issues in the Lands portfolio, which the Treasurer is also responsible for, and MG Corporation's agricultural and pastoral land aspirations.

Sharyn Morrow. The group discussed several topics of importance to the Kununurra community, including: funding for the MG Youth Wellness plan; the impacts of the cashless debit card and alcohol restrictions; the impact of the CDP job initiative on the employment sector; independent business development opportunities; and land and native title issues.

WA Minister for Regional Development, Alannah MacTiernan, travelled to Kununurra to meet MG directors and staff at the Frank Wise Institute in May 2019. MG Corporation took the opportunity to introduce Minister MacTiernan to its joint venture partners in the pastoral and agricultural industries, including representatives from Northern Pastoral Management and the visiting Myuma Group.

RANGERS

MG Corporation and the Parks and Wildlife department came together in November 2018 to celebrate 10 years of MG people providing ranger services on MG country.

The event was hosted by Yoorrooyang Dawang Regional Parks Council and included a performance by Mirima Dancers at Celebrity Tree Park before lunch and presentations at the Kimberley Grande.

The MG ranger program was established under the Ord Final Agreement and provides a mechanism for MG people to protect and manage their own country. The program provides an employment pathway for young people in the region and also encourages the sharing and recording of conservation and land management expertise.



Harry Jinjair attends the ranger celebration



MG dancers entertain the crowd at the ten year ranger celebration

Attendees at hugely successful ranger celebration



MG Corporation hailed a milestone event attended by MG people, State Government Ministers and members of the Durack family from all over the world as a significant step towards true reconciliation in the East Kimberley.

The event also celebrated an historic leap forward for MG Corporation in its pursuit of pastoral ventures, with the State Government agreeing to hand over sole management of a significant East Kimberley reserve.

Reserve 31165 is a 125,000 hectare parcel of land to the south of Lake Argyle and is currently jointly managed by MG Corporation and the Department of Water and Environmental Regulation.

The reserve was originally resumed from the Durack family pastoral estate in the 1970s to support the Ord River irrigation works.

Under the Ord Final Agreement, reached between MG elders and the State Government in 2005, MG Corporation made clear its intention to solely manage the reserve in the long term, and MG officially made that request in mid-2015.

Ord Final Agreement fulfilled

Lands Minister Ben Wyatt presented MG Executive Chair Lawford Benning with a Statement of Intent during a ceremony at the Durack family homestead on 15 June to mark the 40th anniversary of the Argyle Homestead Museum.



Ben Wyatt and Dominique Reeves with the Statement of Intent for Reserve 31165

In his speech at the event, Mr Benning said the Statement of Intent recognised the hard work of MG elders in reaching the Ord Final Agreement, which was the most comprehensive Indigenous Land Use Agreement of its kind.

He said it was now up to MG Corporation to build on what his elders started.

"We, the Miriuwung people, know that for our people to have a secure future we have to build onto our traditional native title rights a commercial and economic base," he said.

"We are more than ready now for utilising our land holdings, in ways that look after the country and simultaneously create training and job opportunities, especially for our young people."

Mr Wyatt said the government was pleased to have fulfilled its commitment under the Ord Final Agreement.

"The McGowan Government will work with MG Corporation to put a suitable management plan in place, ensuring the corporation has the best opportunity to appropriately manage the land," he said.

"This decision shows the government's continued commitment to Aboriginal economic development by providing opportunities for traditional owners to sustainably manage their land."

Walking together with courage

Both Lawford Benning and Ben Wyatt believed the ceremony was particularly significant because of the participation of the Miriuwung traditional owners. Both paid tribute to the lasting relationship between the Durack family and MG people, who found a way to co-exist after the Duracks landed on MG land nearly 137 years ago. Lawford Benning said it was particularly fitting that the ceremony took place just after



Lawford Benning, Perpetua Durack, Michael Clancy and Ben Wyatt in front of the Durack family tree

National Reconciliation week, as it embodied the theme 'Grounded in truth – walk together with courage'.

"There might be an Aboriginal mob like ours elsewhere in Australia who have managed to maintain unbroken good connection with the white family who first settled on their land, but I have never heard of another with a relationship like ours. So I am going to claim that it is unique, until someone proves otherwise!" Lawford said in his speech.

MG Corporation is excited to be in a position to explore the potential of its land, and anticipates Reserve 31165 will be instrumental in its plans to open up MG land to cattle production and irrigation. MG recently signed an MOU with Jack Burton's Northern Pastoral Management to establish a cattle supply chain from the East Kimberley to the abattoir in the West Kimberley.

MG's economic pursuits will provide the capacity to fund social programs to enable better education, employment and health outcomes for MG people.



Des Hill, Ben Wyatt, Ben Ward, Lawford Benning and Myrtle Ward



Lawford Benning, James Benning, Myrtle Ward and Ben Wyatt

As in previous years, the MG Group has continued its work towards delivering social programs and advocating for MG and other Aboriginal people in terms of their social needs and aspirations.

Youth Wellness Initiative

MG Corporation hosted a private meeting with the Premier during his visit to Kununurra in July 2018. The Premier was accompanied by Member for the Kimberley, Josie Farrer, and the retiring Chief Justice and Lieutenant Governor of Western Australia, Wayne Martin.

The meeting presented a wonderful opportunity for MG Corporation to introduce its Youth Wellness Initiative to the VIP guests; a program to divert Aboriginal children away from detention by providing alternative pathways in the justice system. In order to demonstrate their support for the Initiative, a number of local stakeholders also attended the meeting.

At the meeting, MG Corporation identified that the Garrjang Village site at East Lily Creek would be an ideal facility to house the Youth Wellness program's MG Empowerment Centre as a safe space for children, young people and their families to stay in. The Premier changed his schedule for the day in order to visit the site with Ms. Farrer, Mr. Martin and MG representatives to ascertain its suitability for the proposal.

Following the Premier's visit to MG Corporation, the Youth Wellness Initiative made the front page of the

Kimberley Echo, with confirmation that the Premier is looking into the proposal. Mr. McGowan confirmed that he has organised meetings with the Department of Justice and the Department of Communities to examine the ideas put forward by MG Corporation. MG Corporation has also been separately contacted by the retiring Chief Justice with his support for the Youth Wellness Initiative and confirmation that he has passed details of the program to the President of the Children's Court in Western Australia, Judge Julie Wager.

MG Corporation representatives visited Parliament House in Perth in October 2018 in order to take the lead on regional youth issues and promote its Youth Wellness Initiative. The private meeting was hosted by Simone McGurk, the State Minister for Child Protection, and Fran Logan, the State Minister for Corrective Services and Member for the Kimberley, Josie Farrer. The MG team—comprising Executive Chair Lawford Benning, Independent Director Tom Stephens and MG Senior Legal Counsel Dominique Reeves - was also attended by senior representatives from each Minister's office, as well as other State Government departments.

Following calls to act, MG Corporation organised two community



safety meetings on in February 2019 to consider a new way forward for addressing the town's youth matters. The meetings come on the back of MG's existing work in the youth wellness space and its push to find cultural solutions to existing problems.

100+ Jobs Initiative

Working in partnership with Binari-binyja yarrowoo Aboriginal Corporation, as well as other organisations in the East Kimberley, MG Corporation has spent the year working towards jobs for over 100 Aboriginal people in the region.

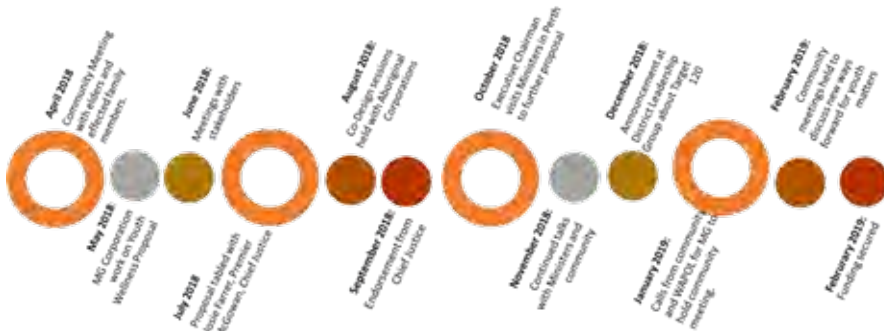
Funded by the Commonwealth and Western Australian Governments, the 100+ Jobs Initiative seeks to reduce welfare dependency and increase economic independence whilst ensuring that project participants have strong culture, strong purpose and a good job. The project also aims to create a skilled workforce that supports regional development.

Following a comprehensive design phase, MG Corporation opened its doors to participants on 1 October 2018. 39 people registered as participants with the program on its opening day, with an additional 5 people registering since then. Attendance has been steady amongst participants since that time.

Activities to date include 1:1 intensive case management with Employment Coordinators, including referrals to wraparound support services, sessions with guest speakers and role models, and resumé writing workshops. The most well-attended and received session was an industry visit to MGCBM, where participants

Mark McGowan, Lawford Benning, Josie Farrer and Wayne Martin visit Garrjang Village





spoke to Dean about what it takes to be a builder and visited one of the houses currently being built by MGCBM. The participants were amazed by what MG people working for MGCBM were able to achieve.

Wraparound support services have also been really receptive to the program—with OVAHS, KGT, Waringarri Arts, and KWAC participating at different levels. Over 30 employers have engaged with the initiative, including Aboriginal Corporations, private and public-sector businesses, confirming that they are open to employing a participant when they are ready to enter the workforce.

Tertiary Scholarships

Kirsty McLean

MG Tertiary Scholar, Kirsty McLean, completed her first year of medicine in 2018 and was also awarded the Indigenous Chair of the Western Australian Medical Student Society for 2019.

As well as completing her first year of post-graduate studies in medicine this year, Kirsty attended the 2018 Australian Indigenous Doctors Association conference in Perth which provided opportunities for her to network and meet many accomplished Aboriginal doctors from around Australia. Kirsty also attended the World Indigenous Suicide Prevention Conference in Perth this year.

In her new role as Indigenous Chair of the Western Australian Medical Student Society for 2019, Kirsty hopes to provide support and

encouragement for current or aspiring Aboriginal medical students and to host events focused on health issues within the Aboriginal community.

In her academic achievements and voluntary positions, Kirsty is setting an example for all MG people and what they can achieve, with her sister enrolling in an Indigenous pre-medicine and health sciences enabling course at Curtin University this year.

Jayla Shae Davey

MG woman Jayla Shae Davey continues to build on a promising acting career after wrapping filming of the first season of a new children's science show, which is set to air on a national network.

Jayla's role on the new show, titled 'Wow, That's Amazing', comes after her big break in a TV ad in the US and several stage roles.

In an interview with the Kimberley Echo, Jayla thanked MG Corporation for supporting her study at the International Screen Academy in Sydney, which opened doors for her in the industry.

"I received a scholarship and also sponsorship from MG Corporation so I was able to afford to do it," she told the Kimberley Echo.

"I learnt writing, producing and camera operating so I can go out into the industry and do anything."

Having grown up in Kununurra, the 22-year-old connected with indigenous playwrights who stoked her love for acting, which led to her

completing a Bachelor of Performing Arts at WAAPA before moving east.

A big congratulations from MG to Kirsty, Jayla and their families.

Dual Language Names

In May 2019, the newly-renamed East Kimberley College unveiled signs funded by MG Corporation on every building on campus which feature English and Miriuwung names.

The signage project was delivered in consultation with the Mirima Dawang Woorlab-gerring Language and Culture Centre, which helped identify suitable Miriuwung names for each building.

The addition of Miriwoong names at the school aligns with the United Nations' declaration of 2019 as the International Year of Indigenous Languages and the school's celebration of NAIDOC Week.

EKC principal Kate Wilson said she hoped the project would send a message from the school to the community of tremendous respect for the Miriuwung culture and its people.

MG and KWAC

Building on its existing relationship as part of the One Family at a Time program, MG Corporation and KWAC reached an agreement in June 2019 to work together in partnership in areas of mutual interest.

Areas where MG Corporation and KWAC share a mutual interest are mainly in the social space, including youth wellness initiatives, education programs, Headspace, PCYC and Target 120.

The CEOs of both corporations, Allan Wedderburn and Des Hill agreed that the corporations could better serve the interests of local Aboriginal people by collaborating, particularly in dealings with the State and Federal Governments.

Kirsty McLean attending the 2018 AIDA conference



Jayla Shae Davey, left, in an International Screen Academy production



MG Corporation meets with KWAC to discuss ways of working together



The MG CFT has continued to manage the investment assets of the MG people, overseeing the professional management of the portfolio and authorising distributions for the trust’s cultural and charitable objectives.

Portfolio

The MG CFT portfolio made a very strong gain across the financial year of \$1.66M, which equates to an investment gain of +8.80%.

At 30 June 2019, the CFT held a total of just under \$20M in funds, spread across a range of asset classes with a strong skew towards Australian investments.

Distribution

The CFT directors agreed in June 2019 to distribute up to \$1M of the income for the 2018-2019 financial year.

In order to balance the long-term social and economic needs of MG people with the short-term financial requirements of MG Corporation, the CFT directors resolved to split the distribution as follows:

- Continuing its policy of supporting the practise of law and culture by MG people, the CFT contributed \$15,000 for each of the men’s, women’s and whaling cultural funds (\$45,000 in total plus administrative expenses).
- \$365,000 was distributed to MG Corporation for a distribution to the Dawang groups in a supported distribution model, including – for the first time – the establishment of a funeral program.
- \$340,000 was distributed to MG Corporation for economic development activity and the payment of administrative and operational expenses.

The reporting period saw a lot of work from MG Corporation staff to administer the distribution to Dawang groups following the CFT decision of June 2018. Meeting notices were distributed to Dawang

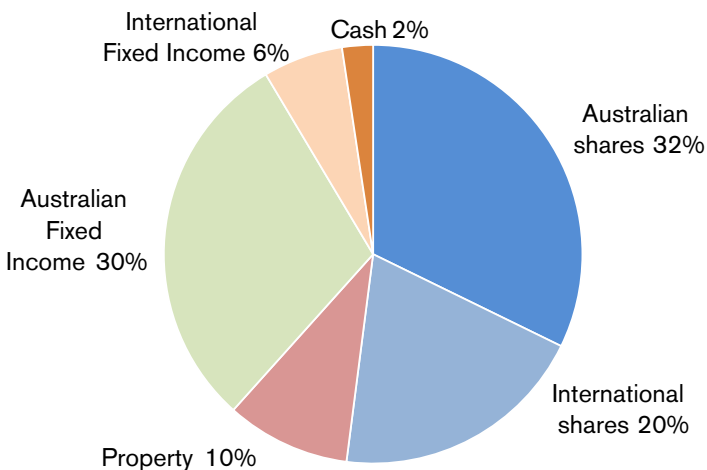
group representatives and notices were advertised in all local Aboriginal Corporations and shops, as well as on Waringarri Radio three times a day for a fortnight. Sixteen meetings took place with each Dawang group over a two week period, with over 1,500 applications processed in the following 3 month period.

OES

The MG CFT continues to manage remaining funds from the MG OES. Numerous applications were heard and approved by the MG CFT directors throughout the year, including applications for sports sponsorships and a Graffiti Mural Project.

The MG CFT directors will continue to work in the next reporting period towards using the remaining OES funds to leverage additional resources from third parties for improved social outcomes.

ASSET ALLOCATION



FYTD INVESTMENT PERFORMANCE

Year to date movement (from 1 July 2018)

Income	\$	1,212,030	
Franking credits	\$	278,058	
Fees	-\$	157,160	
Growth	\$	333,477	
Total YTD investment return	\$	1,666,405	8.80%

Ted Carlton plays the didgeridoo at ranger celebration



The MG PBCs manage MG people's native title rights over their determined areas and protect local Aboriginal heritage. Theirs is a dual role: preserving the past whilst looking to the future. The MG PBCs are now highly experienced in considering and sensitively managing native title and heritage clearance requests, while maximising benefits to MG people.

Future Acts

The reporting period has seen a strong performance by the MG PBCs in considering a significant number of notifications from third parties wishing to conduct activities on MG land. They have responded effectively, transparently and in a timely way to external demands and worked proactively with third-party proponents to create economic and development opportunities. As in previous years, the subject of notifications include exploration and mining, construction programs, Indigenous Land Use Agreements, tenancy applications, clearance of native vegetation, public works and infrastructure, agricultural development and various environmental matters.

Applications were received from private sector companies such as Bonaparte Petroleum, Boral, CipherTel, East Kimberley Diamond Corp, Kingmaker Exploration, Kununurra Motocross Club, Ord River Mining, Reach Beyond, Seafarms, Triple J Tours, West Australia Resource Development, and Woodside.

The MG PBCs have also worked collaboratively throughout the year with the public sector via SWEK, DPIRD, DBCA, Main Roads, DWER, WAPOL and the Water Corporation.

Applications have also been received in the reporting period from local Aboriginal Corporations such as Wirram Aboriginal Corporation, KWAC, Waringarri Media and Waringarri Arts.

The MG PBCs continue to work with the Aboriginal Lands Trust, the Department of Planning, Lands and Heritage, the Kimberley Land Council and KALACC to deal with issues of native title and culture in the region.

Aboriginal Heritage

The PBCs act on behalf of MG people to protect and preserve their Aboriginal heritage and culture throughout the year.

The MG PBCs have undertaken a number of heritage impact assessments, clearances and work surveys throughout the reporting period and continue to work diligently to prevent and address any site disturbances within MG country.

Representation

PBC members are aware that the question of who speaks for country is a sensitive one. Issues of country, heritage, law, culture and family groups are always referred to the Garralyel. MG traditional owners are encouraged to speak to the Garralyel regarding any

queries or comments they may have in relation to future acts, the preservation of heritage and culture, clearances or work surveys or any activity being undertaken on their country.

Many younger traditional owners attended heritage clearances this year to hear stories of their country and learn from the elders.

Other

The PBCs have a strong reputation in the native title field for their representation of MG people and their expertise is much sought after. PBC members continue to contribute towards surveys, workshops and papers for entities such as the Australian Institute of Aboriginal and Torres Strait Islander Studies and the Aurora Project.

This year, the MG PBCs submitted a robust and detailed response to the State Government's proposed reforms to the Western Australian *Aboriginal Heritage Act*. It also participated in numerous consultation activities with ORIC representatives to consider proposed amendments to the Commonwealth *Corporations (Aboriginal and Torres Strait Islander) Act*. The MG PBCs also worked with the National Native Title Council to assist in its Economic Case Studies Project.



David Newry provides guidance on Bonaparte Petroleum proposals



MG people conduct an Aboriginal heritage clearance



MG people work with SWEK on Lake Argyle Road widening proposal



NATIVE TITLE DETERMINATION

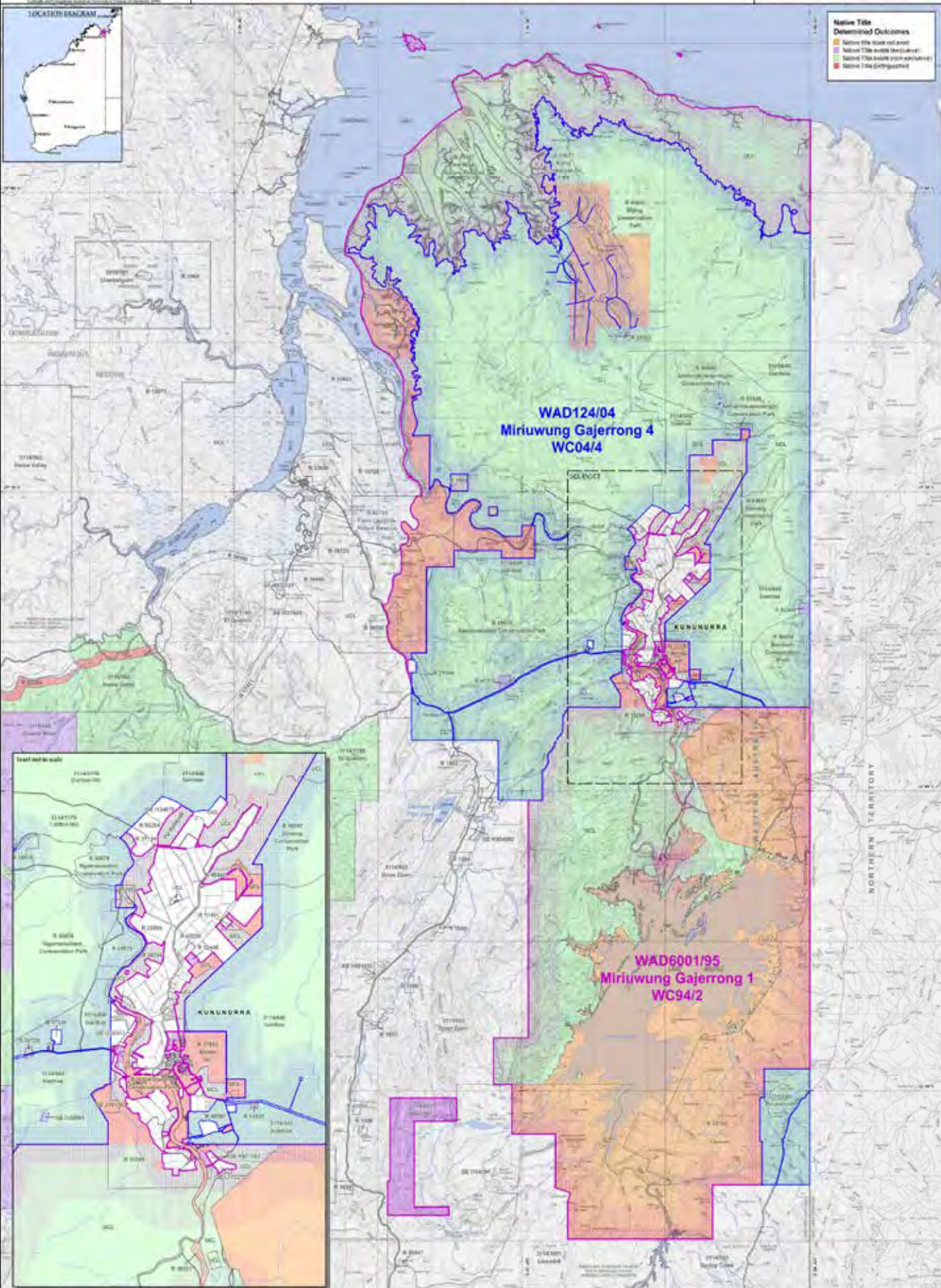
WAD124/04 Miriung Gajerrong #4 (WC04/04)

WAD6001/95 Miriung Gajerrong #1 (WC94/02)

NOTE: Topographic images should be used as a guide only.

- WAD124/04 as determined on the 21/11/2006
Miriung Gajerrong #4 (WC04/04)
- WAD6001/95 as determined on the 09/12/2005
Miriung Gajerrong #1 (WC94/02)

Copyright © 2006 by Esri. All rights reserved. Esri and ArcView are registered trademarks of Esri. Microsoft and Windows are registered trademarks of Microsoft. Other names may be the trademarks of their respective owners.



Native Title Determined Outcomes

- Native title does not exist
- Native title exists (partial)
- Native title exists (entire)
- Native title extinguished



MG Corporation holds the right to the freehold interest in a number of cultural and community lands within the Ord River Irrigation Area, including Community Living Areas, the New Conservation Areas and buffer lands. Cultural and community lands are held by the MG DLT on behalf of MG people. The MG DLT also owns other sites of significance for the protection of Aboriginal heritage and culture in the region.

Existing portfolio

Land management responsibilities have continued for the MG DLT throughout the year in respect of Packsaddle Freehold Area (comprising Jimbilum and Yirrallalem communities), East Kununurra Freehold Area (comprising Janama Springs and Yuna Springs communities) and the Geeboowama, Goose Hill and Munthanmar Community Living Areas.

The MG DLT also owns the Community Living Areas within the Yardungarrl boundary which include Alligator Hole, Dingo Springs, Four Mile, Gulberang, Ngunulum, Nulwirriwirri and Woolgergerberleng.

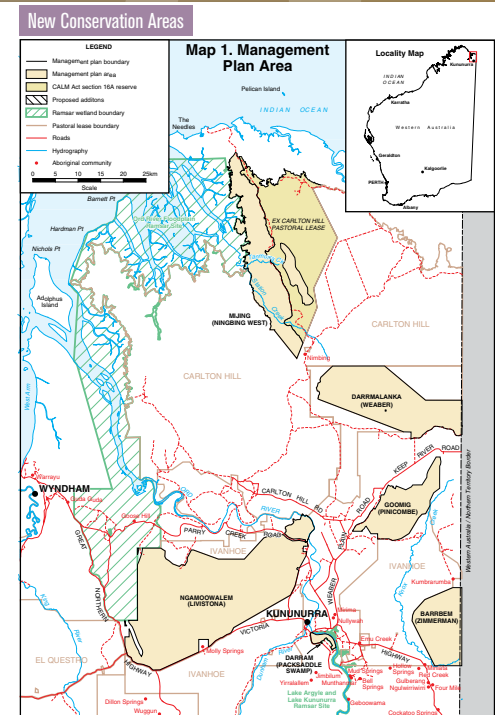
Following its successful EOI process this year, MG Corporation has identified a number of economic development opportunities for these areas, with a focus on the pastoral sector in the short term and the agricultural industry in the longer term. Over the next few months MG Corporation and the MG DLT will work with the relevant native title holders to identify appropriate economic opportunities for those areas which continue to respect their cultural integrity and heritage values.

MG Land Distribution Policy

Following a considerable amount of work by MG staff and MG DLT directors to develop the MG Land Distribution Policy, as well as a comprehensive and robust consultation process having been undertaken with MG Dawang groups, a final draft of the policy was approved by the Dawang Council this year.

The policy sets out the methodology and process for people seeking land tenure over MG land. Land under the control of the MG Group is often subject to restrictions which seek to balance the tension between land use in the present and land preservation for the future. The policy aims to navigate those restrictions and set out guidelines for people seeking to make land applications. The policy is particularly suitable for MG people seeking formal tenure over parts of Community Living Areas or other community lands and includes template application forms and project proposal documents to assist MG people complete the complicated land application process.

Whilst the MG Land Distribution Policy aims to set out some generic information for people seeking land



tenure on MG land, each application will be assessed on its own merits and requirements may vary depending on the type of interest and purpose for which that interest is being sought.

Applications from MG people regarding land tenure over MG land are in the process of being considered by a sub-committee reporting to the MG DLT.

Land entitlements under the OFA

The MG DLT continues to work closely with the Department of Planning, Lands and Heritage, the Department of Biodiversity, Conservation and Attractions and the Department of Premier and Cabinet, as well as MG native title holders, to finalise land transfer obligations set out in the OFA.

Work is ongoing between the State and MG to ensure that the use of the New Conservation Areas and Buffer Areas under the OFA by MG people is not overly restricted.

MG Community Living Area



July 2018

All the MG rangers participated in a prescribed burn in the Mirima National Park. Prescribed burning was done to implement a buffer to prevent a major bushfire from impacting the town.

August 2018

After an invitation was received from the school for students and rangers to collaborate, the MG rangers, together with the school students built a fire pit for smoking ceremonies at East Kimberley College.

A group of rangers attended the school and engaged the children in cultural activities such as spear throwing during NAIDOC week. The rangers put some fine artwork on display during NAIDOC week at White Gum Park, and engaged with the community and tourist who attended the celebrations. As part of school holidays activities the children from Save the Children were invited to join the rangers on a ride on the gators which the rangers use for everyday activities. There were 50-60 children in attendance.



MG Rangers and coordinators involved with the language trip

September 2018

Fences and spear gates were constructed at Carlton Hill and Ngamoowalem to keep unwanted cattle out of the Nature Reserves and Parks. This seems to be working really well.

guiding and learning to engage better with the public.

The rangers installed shelving throughout the yard at the Parks and Wildlife Kununurra depot as part of the annual clean up.

October 2018

The rangers attended the Savanna Guides training at Fitzroy Crossing broadened their knowledge on tour

The rangers attended a snake handling course. They managed to conquer their fears and by the end of the course they were able to hold and handle different types of snakes.

Snake handling course





Edmund and Jeromy at the Kulin fire



Prescribed burning in Mirima National Park

November 2018

Erosion control work was done in the Mirima National Park. This work was aimed to control water flow in some areas and to stop washing sand on some of the roads in and around Kununurra.

December 2018

In December a group of 5 rangers went with Operations Officer John Bozanich to 80 Mile Beach to help with a turtle survey.

January 2019

The rangers assisted with the installation of a new board walk in the Mirima Nation Park. The walkway got installed in an area which is conducive to flooding and is now accessible during wet weather.

Erosion Control training was conducted in Mirima National Park. The course was run by a QLD company showing the Rangers how to control water flow through surveying and using with small levy banks to control erosion. The rangers learned how to use technical equipment to conduct land surveys.

February 2019

Jeremy Moore, William Simon, David Newry and Edmund Calwatt are now in the final stages of completing their Cert II training in Conservation and Land Management. With the newly appointed Trainer and Assessor on board, the final stages should be completed soon.

The MG Rangers got deployed down south to assist with the Kulin campaign fore near Perth. They worked long shifts and were considered a valuable asset during their deployment.

March 2019

The rangers attended St Joseph's school to interact with the children and show them what being a ranger is all about. The kids enjoyed the interaction with the rangers.

The rangers undergone Iveco truck and tractor training which was presented by Parks and Wildlife. During these sessions the rangers learned how to drive/operate the Iveco truck and the John Deere tractor in typical Kimberley conditions.

April 2019

During the wet season the rangers continue to maintain the Parks through whipper snipping, spraying weeds etc.

May 2019

The rangers assisted UWA staff in

surveying caves and artwork during a field trip to Mijing.

In May ranger groups from across the Kimberley got together for the "Ranger Catchup", to showcase their individual skills during a series of activities. The rangers enjoyed the event and their skills were very impressive.

June 2019

Rangers and TOs went on a language trip to Buttons crossing. This language trip provided the opportunity for rangers to hunt a kangaroo and a bush turkey, the traditional way. The elders then taught the group the different parts of the animals in their language and what those parts could be used for. Like using kangaroo sinew to tie the end of a spear.

Fence construction at Carlton Hill



Reserve 31165 covers 125,000 hectares and is bordered on two sides by Lake Argyle. The Reserve is jointly managed by MG Corporation and the West Australian Department of Water and Environmental Regulation through the Joint Management Committee (JMC).

The Reserve 31165 ranger program is facilitated by the Department Biodiversity, Conservation and Attractions through a service level agreement with MG Corporation and funded by the Commonwealth Government through its Working On-Country program.

The R31165 JMC comprises representatives from the Department of Water and Environmental Regulation and each of the four Dawang groups within R31165 namely;

- Bilbildjing
- Yunurr
- No name
- Mandangala

Fire Management

Firebreaks were put in place using the helitorch (March 2019) in preparation for the late season hot burn in August 2019. The prescribed burn prescription process and necessary approvals were undertaken in May 2019 for the burn. The prescription should be approved, and the firebreak burn will be undertaken next reporting period mid-August 2019 involving the ground and aerial support of the R31165 Team.

The rangers completed eight shifts on the Districts fire availability roster, for a total of 40 days. Three of the rangers were heavily involved in the Districts response to wildfire. Two major inter-agency incidents

threatened Kununurra within a week of each other. Three of the rangers were involved in both these fires working long shifts. The rangers also attended three fires at Purnululu National Park.

Feral Animal Management

Opportunistic settings were captured of feral cats, dogs, and pigs around the reserve whilst treating Mimosa pigra. Reports of feral cats and dogs travelling onto usually surrounded islands in Lake Argyle impacting on bird life reported to Wildlife Officer with plans to begin a trapping and control program in the next reporting period (3-4). R31165 Ranger to carry out control with firearms August-September 2019 under DBCA corporate firearms licence.

New free feeders and pig traps were setup for an eight-week period October to November 2018. Camera traps were installed at the feeders. No pigs were sighted or captured during this period. It was learned, that Station staff opportunistically shoot pigs which attributed to them being trap shy. Planning is currently in place for Rangers to re-deploy traps in more strategic locations on the Reserve September - October 2019.

Weed Management

Mimosa Pigra; Nine trips were undertaken during the reporting period. For a total of 29 days spent at



Tristan Jessell, Eugene Park and Peter (Benji) Curtin deploying a trap within the crocodile control zone, after a reported sighting by a member of the public

the reserve. 694 plants treated and an approximate area of 3929 hectares surveyed/treated. It appears Rangers have significantly reduced plant numbers with only 60+ plants being found after the wet (Feb-June) 2019.

Rangers and DBCA district staff undertook a two-day trial using a drone to identify weeds. The drone flew a flightpath where rangers had identified Mimosa plants. The footage was then reviewed to see if the mimosa plants were identifiable from the drone imagery. Unfortunately, the plants were too small to identify. It is proposed to use the drone for another trial at the end of the wet season 2020. This should aid in detection and identify areas of concern. The rangers have been trained in drone operation and analysing images.

Rubbervine (weed of National Significance); The rangers undertook three trips for a total of nine days work and treated 3526 plants over 235 hectares. Trip 18th Sep 2018 - Lake Argyle Area. Approx. 4 Ha Covered with 0 plants found.

Soil and Vegetation Management

Cattle management; A two-day trip to Mckenna Springs was undertaken 9th - 10th August 2018. Minor repairs were completed including restraining broken wire and replacing star pickets. Springs seem to be benefiting with less pressure from cattle.



Rangers removed and relocated a problem saltwater crocodile from the Wyndham Port



Eugene Park, Peter (Benji) Curtin and Terrence Wilson with Rebecca Lee Fsher from the NIAA about to release 100,000 Barramundi fingerlings into Lake Kununurra

A day trip was completed to re install the photo monitoring points as the previous markers had been removed. There was no noticeable change in vegetation. Another trip will be undertaken when the fence is accessible after the wet in 2020.

Crocodile Management

All R31165 Rangers continued their weekly patrol and rebait of five traps in Lake Kununurra accruing around 600 hours on Lake Kununurra in the reporting period. 1 Saltwater Crocodile was trapped during this reporting period (March 2019) and Euthanased. New saltwater crocodile warning signs were erected at Swim beach, Celebrity Tree- and Lions Club Park boat ramp. The installation of crocodile warning signs supports the Departments new Crocodile communication strategy. All 4 Rangers are involved in the program.

Education, Training and Development

Tristan Jessell is near completion of his Certificate 3. Terence Wilson has been enrolled in his certificate 2 and is currently completing units in his training plan. Both Peter Curtin and Eugene Park are looking forward to starting their Cert 4 CLM in the next reporting period (Oct 2019). The new Training Coordinator position has been filled in Kununurra which will enable Rangers daily access to help and support addressing their training needs.

The rangers partook in the Savannah guides fields school 4th - 7th Oct 2018, improving their tourism-based skills. Terence Wilson the newest 31165 ranger completed his chainsaw accreditation and DBCA's Fire fighter Crew member course in November 2018.



Infrastructure and Asset Management

Minor repairs were undertaken to the camp during the reporting period. A sea container was installed north of the Benn River (Oct 2018) to house the Gators for the wet season. This makes treating this area a lot easier as the Benn River does not have to be crossed. A 3G weather station was installed to monitor rainfall and other conditions on the reserve. This will help in planning trips in the wet season and access due to rainfall events.

Other Activities

The rangers acted as guides, coxswain and local advisors for an animal planet documentary series featuring Jeremy Wade. The rangers spent three days on Lake Argyle with the film crew.

80 Mile Beach Turtle Survey. Eugene Park travelled to Broome to participate

in the turtle survey. Duties included counting tracks, nests and eggs. Rangers have participated in wildlife callouts, removing snakes at various locations around Kununurra.

The rangers participated in the NAIDOC week celebrations. They had a stall at White Gum Park showcasing their work. They also assisted in NAIDOC week activities at the schools, including manufacturing a fire pit with KDHS students for traditional ceremonies.

The rangers help install three water tanks at Purnululu National Park. The tanks are used for fire mitigation activities.

The rangers facilitated four visits from Clontarf academy. The Clontarf students visited the yard and worked with the rangers. The rangers have also hosted two work experience students taking them to the reserve to undertake Mimosa control work.



Eugene Park and Peter (Benji) Curtin with Parks and wildlife Operations Officer Vernon Sadler treating *Mimosa pigra* on Reserve 31165



Rangers planting some saplings around their campsite on Reserve 31165

MG Corporation continues its longstanding partnerships with Jawun and Aurora, placing skilled people into Indigenous organisations.

Jawun is a not-for-profit organisation that aims to build the capacity of Indigenous organisations across Australia. It places skilled people from leading Australian corporations into Aboriginal corporations. The reporting period saw MG Corporation hosting six secondees from the Jawun program, comprising:

- Michelle Marinovic from the National Disability Insurance Agency in Geelong, working predominantly with MGCBM on media issues including advertising, website improvement and public relations.
- Donna Heathcote from Woodside in Perth, working on the 100+ Jobs program assisting in the design and implementation phase.

- Tim Stevenson from NAB in Melbourne, working directly with MG elder Ben Ward to help progress a multi-stage tourism initiative.
- Andrew Wegman from Macquarie Capital in Melbourne, reviewing housing programs in Kununurra and the Kimberley.
- Justin Hall from NAB in Melbourne, creating electronic systems to assist the MG PBCs to process and manage native title applications and the future act legal process.
- Emma Palmer from the RAC in Perth, implementing systems and processes for a housing program in Kununurra which will support apprentices and trainees and access affordable accommodation.

MG Corporation also continued its long standing partnership with the Aurora Project, based in Sydney, this year. The Aurora Project works with Indigenous organisations to strengthen capacity by arranging internships for top law students from across Australia with those organisations.

The reporting period saw MG Corporation hosting Nicholas Costello, a final year law student and a Wiradjuri man from the Gold Coast, who worked with the MG Senior Legal Counsel Dominique Reeves to provide support on various native title, heritage and compliance matters.



Michelle Marinovic



Donna Heathcote



Tim Stevenson



Andrew Wegman



Justin Hall



Emma Palmer



Nick Costello

**Miriuwung Gajerrong Yirrgab Noong Dawang
Aboriginal Corporation and Controlled Entities
ICN 4597**



(MG Corporation) ABN 79 270 210 553

PO BOX 2110

Kununurra WA 6743

Phone: (08) 9166 4801

Email: eo@mcorp.com.au

Incorporated under the Corporations
(Aboriginal and Torres Strait Islander) Act 2006